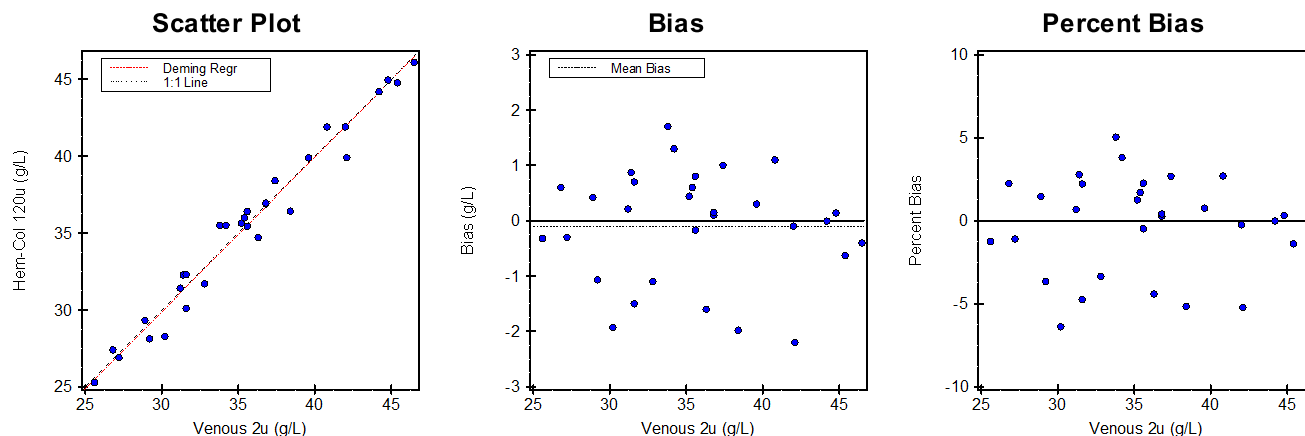


## Alternate (Quantitative) Method Comparison

X Method Venous 2u

Y Method Hem-Col 120u



### Regression Analysis

|                    | Deming                   | Regular                 |
|--------------------|--------------------------|-------------------------|
| <b>Slope</b>       | 1,005 (0,936 to 1,073)   | 0,989 (0,921 to 1,057)  |
| <b>Intercept</b>   | -0,265 (-2,741 to 2,211) | 0,295 (-2,171 to 2,761) |
| <b>Std Err Est</b> | 1,039                    | 1,035                   |

95% Confidence Intervals are shown in parentheses

### Supporting Statistics

|               |                   |                        |       |
|---------------|-------------------|------------------------|-------|
| Corr Coef (R) | 0,9844            | SubRange Bounds        | None  |
| Bias          | -0,096 (-0,270 %) | Points (Plotted/Total) | 30/30 |
| X Mean ± SD   | 35,580 ± 5,752    | Outliers               | None  |
| Y Mean ± SD   | 35,484 ± 5,779    | Scatter Plot Bounds    | None  |
| Std Dev Diffs | 1,019             |                        |       |

### Experiment Description

|               | X Method       | Y Method       |
|---------------|----------------|----------------|
| Expt Date     | 13 jun 2018    | 13 jun 2018    |
| Rep SD        | 1              | 1              |
| Result Ranges | 25,60 to 46,50 | 25,28 to 46,10 |
| Units         | g/L            | g/L            |
| Reagent       | --             | --             |
| Calibrators   | --             | --             |
| Analyst       | R. Huisman     | R. Huisman     |
| Comment       |                |                |

Accepted by: \_\_\_\_\_

Signature

Date

### Alternate (Quantitative) Method Comparison

X Method Venous 2u

Y Method Hem-Col 120u

#### Experimental Results

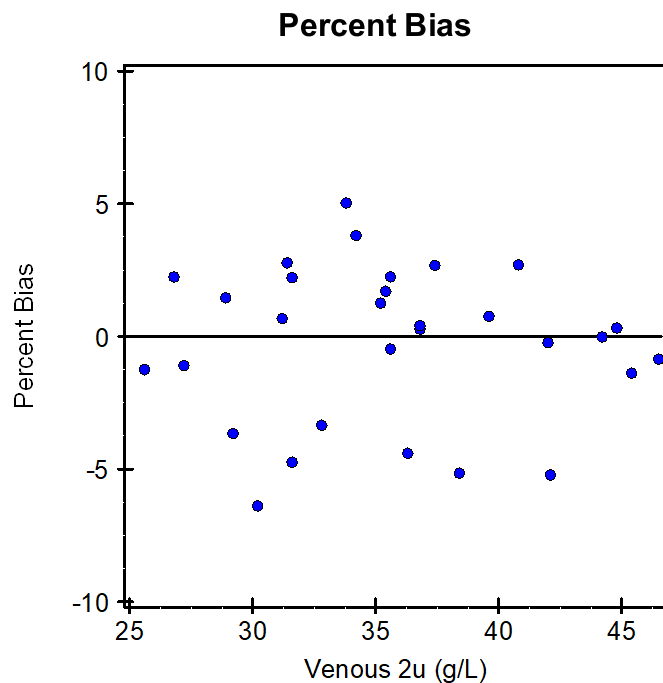
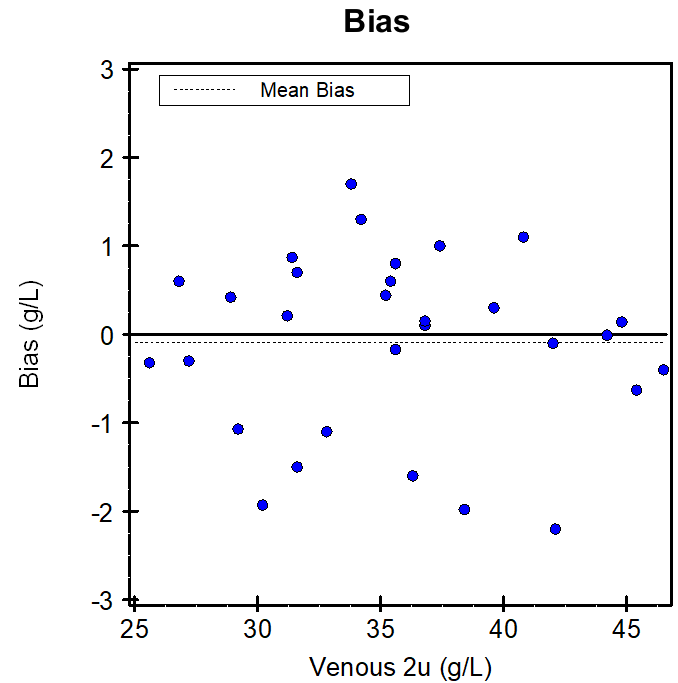
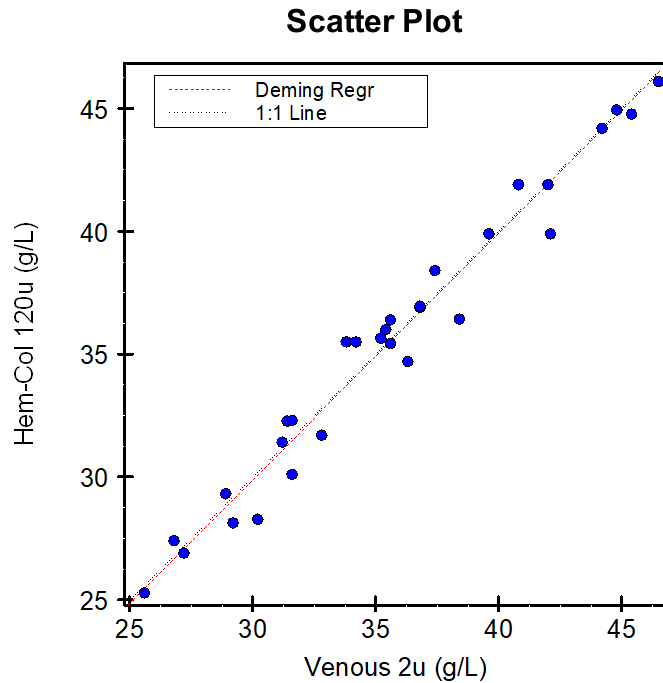
| Specimen | X    | Y    | Bias | Specimen | X     | Y     | Bias | Specimen | X     | Y     | Bias  |
|----------|------|------|------|----------|-------|-------|------|----------|-------|-------|-------|
| S00001   | 26,8 | 27,4 | 0,6  | S00011   | 40,8  | 41,9  | 1,1  | S00021   | 36,80 | 36,95 | 0,15  |
| S00002   | 31,6 | 30,1 | -1,5 | S00012   | 42,0  | 41,9  | -0,1 | S00022   | 45,40 | 44,77 | -0,63 |
| S00003   | 36,8 | 36,9 | 0,1  | S00013   | 34,2  | 35,5  | 1,3  | S00023   | 25,60 | 25,28 | -0,32 |
| S00004   | 42,1 | 39,9 | -2,2 | S00014   | 27,2  | 26,9  | -0,3 | S00024   | 31,40 | 32,27 | 0,87  |
| S00005   | 46,5 | 46,1 | -0,4 | S00015   | 35,6  | 36,4  | 0,8  | S00025   | 35,60 | 35,43 | -0,17 |
| S00006   | 35,4 | 36,0 | 0,6  | S00016   | 33,8  | 35,5  | 1,7  | S00026   | 38,40 | 36,42 | -1,98 |
| S00007   | 37,4 | 38,4 | 1,0  | S00017   | 39,60 | 39,90 | 0,30 | S00027   | 30,20 | 28,27 | -1,93 |
| S00008   | 31,6 | 32,3 | 0,7  | S00018   | 28,90 | 29,32 | 0,42 | S00028   | 29,20 | 28,13 | -1,07 |
| S00009   | 32,8 | 31,7 | -1,1 | S00019   | 31,20 | 31,41 | 0,21 | S00029   | 44,20 | 44,19 | -0,01 |
| S00010   | 36,3 | 34,7 | -1,6 | S00020   | 35,20 | 35,64 | 0,44 | S00030   | 44,80 | 44,94 | 0,14  |

Values with an "X" were excluded from the calculations. Outliers "O" were also excluded.

### Alternate (Quantitative) Method Comparison

X Method Venous 2u

Y Method Hem-Col 120u



This page contains a larger, working copy of the same graphs that appear on page 1.