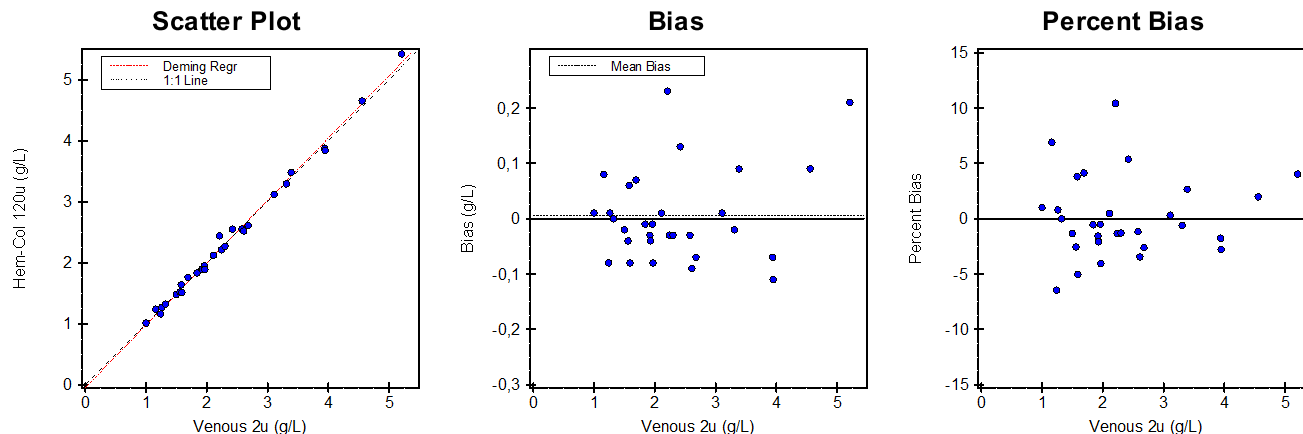


Alternate (Quantitative) Method Comparison

X Method Venous 2u

Y Method Hem-Col 120u



Regression Analysis

	Deming	Regular
Slope	1,021 (0,991 to 1,051)	1,018 (0,988 to 1,048)
Intercept	-0,044 (-0,121 to 0,032)	-0,037 (-0,114 to 0,039)
Std Err Est	0,083	0,083

95% Confidence Intervals are shown in parentheses

Supporting Statistics

Corr Coef (R)	0,9971	SubRange Bounds	None
Bias	0,005 (0,228 %)	Points (Plotted/Total)	30/30
X Mean ± SD	2,338 ± 1,045	Outliers	None
Y Mean ± SD	2,343 ± 1,067	Scatter Plot Bounds	None
Std Dev Diff	0,083		

Experiment Description

	X Method	Y Method
Expt Date	20 jun 2018	20 jun 2018
Rep SD	1	1
Result Ranges	1,00 to 5,21	1,01 to 5,42
Units	g/L	g/L
Reagent	--	--
Calibrators	--	--
Analyst	R. Huisman	R. Huisman
Comment		

Accepted by: _____

Signature

Date

Alternate (Quantitative) Method Comparison

X Method Venous 2u

Y Method Hem-Col 120u

Experimental Results

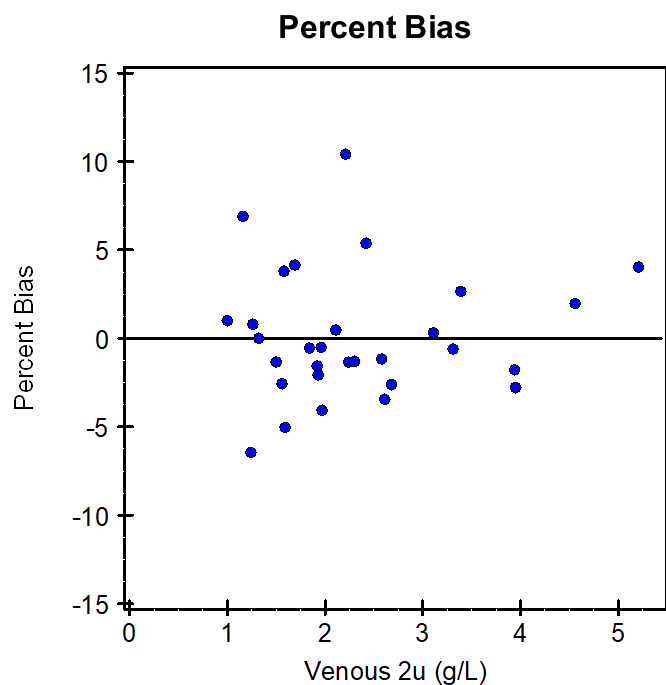
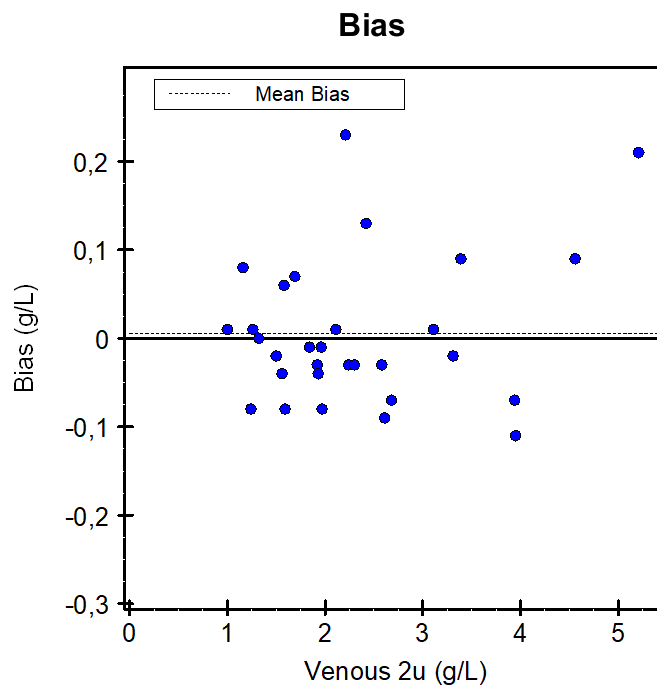
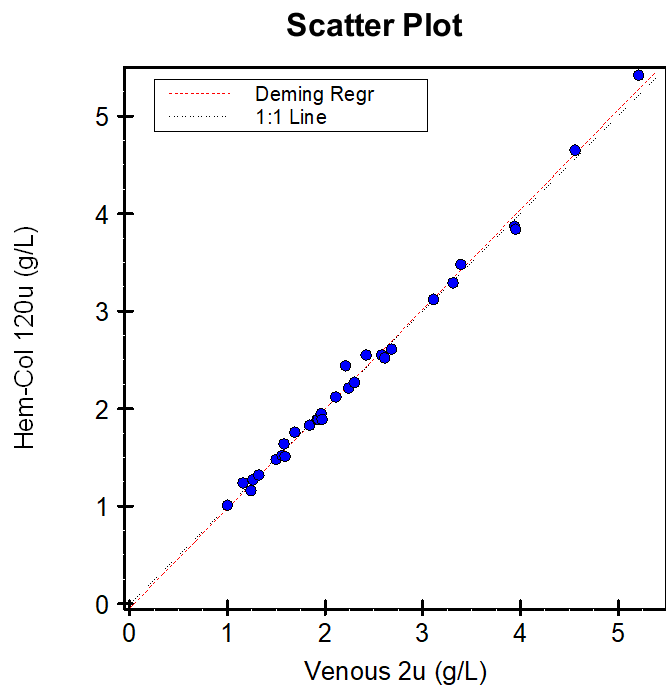
Specimen	X	Y	Bias	Specimen	X	Y	Bias	Specimen	X	Y	Bias
S00001	1,00	1,01	0,01	S00011	3,39	3,48	0,09	S00021	1,26	1,27	0,01
S00002	3,94	3,87	-0,07	S00012	3,95	3,84	-0,11	S00022	1,59	1,51	-0,08
S00003	1,84	1,83	-0,01	S00013	2,42	2,55	0,13	S00023	2,68	2,61	-0,07
S00004	1,50	1,48	-0,02	S00014	1,97	1,89	-0,08	S00024	1,92	1,89	-0,03
S00005	1,96	1,95	-0,01	S00015	2,30	2,27	-0,03	S00025	2,11	2,12	0,01
S00006	3,31	3,29	-0,02	S00016	4,56	4,65	0,09	S00026	1,24	1,16	-0,08
S00007	5,21	5,42	0,21	S00017	1,32	1,32	0,00	S00027	1,69	1,76	0,07
S00008	2,61	2,52	-0,09	S00018	1,58	1,64	0,06	S00028	1,56	1,52	-0,04
S00009	1,93	1,89	-0,04	S00019	2,21	2,44	0,23	S00029	2,24	2,21	-0,03
S00010	1,16	1,24	0,08	S00020	2,58	2,55	-0,03	S00030	3,11	3,12	0,01

Values with an "X" were excluded from the calculations. Outliers "O" were also excluded.

Alternate (Quantitative) Method Comparison

X Method Venous 2u

Y Method Hem-Col 120u



This page contains a larger, working copy of the same graphs that appear on page 1.