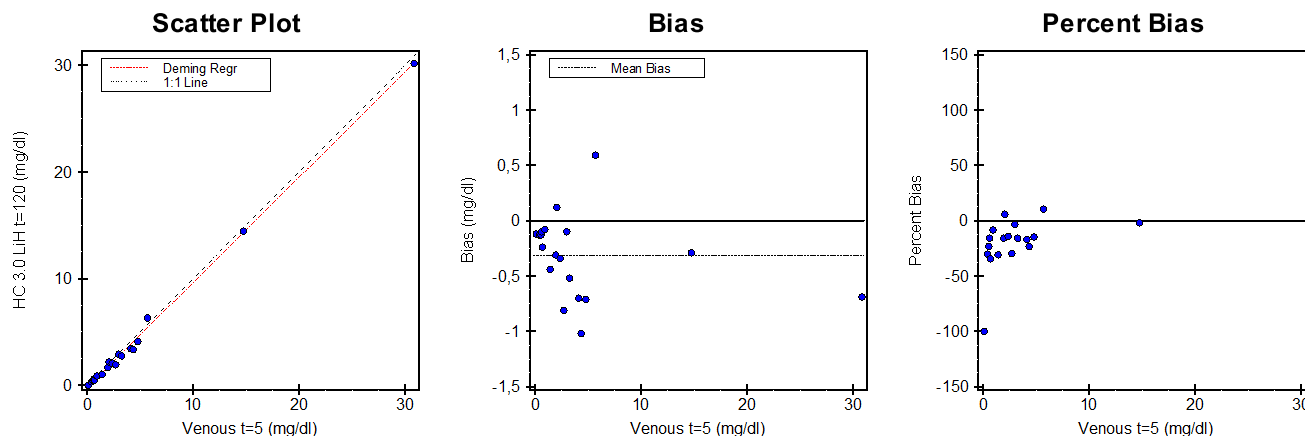


Alternate (Quantitative) Method Comparison

X Method Venous t=5

Y Method HC 3.0 LiH t=120



Regression Analysis

	Deming	Regular
Slope	0,988 (0,963 to 1,012)	0,986 (0,962 to 1,011)
Intercept	-0,260 (-0,460 to -0,060)	-0,255 (-0,455 to -0,055)
Std Err Est	0,361	0,361

95% Confidence Intervals are shown in parentheses

Supporting Statistics

Corr Coef (R)	0,9987	SubRange Bounds	None
Bias	-0,313 (-7,323 %)	Points (Plotted/Total)	20/20
X Mean ± SD	4,274 ± 7,037	Outliers	None
Y Mean ± SD	3,961 ± 6,950	Scatter Plot Bounds	None
Std Dev Diffs	0,364		

Experiment Description

	X Method	Y Method
Expt Date	14 mei 2020	14 mei 2020
Rep SD	1	1
Result Ranges	0,12 to 30,85	0,00 to 30,16
Units	mg/dl	mg/dl
Reagent	--	--
Calibrators	--	--
Analyst	Lisanne	Lisanne
Comment		

Accepted by: _____

Signature

Date

Alternate (Quantitative) Method Comparison

X Method Venous t=5

Y Method HC 3.0 LiH t=120

Experimental Results

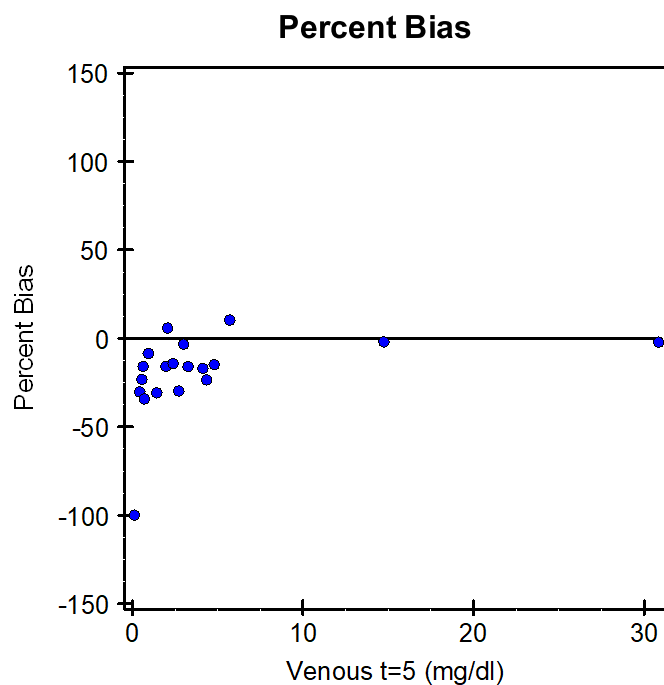
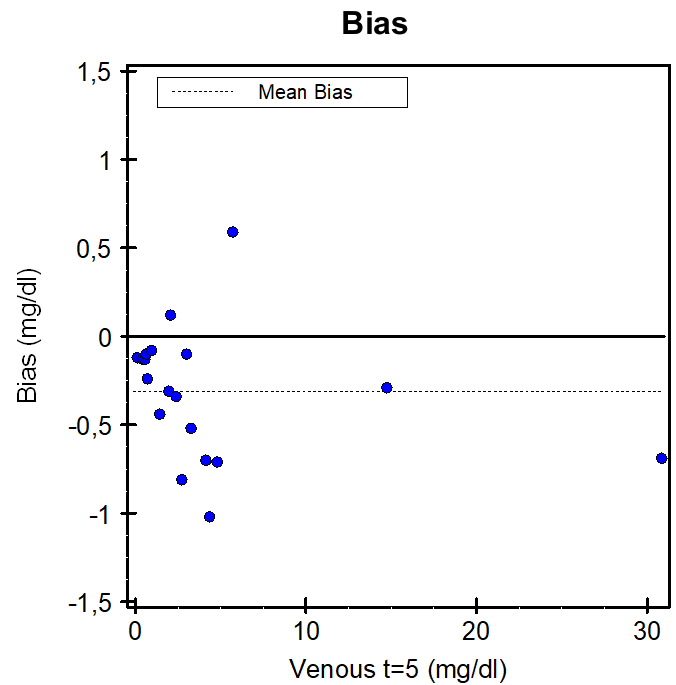
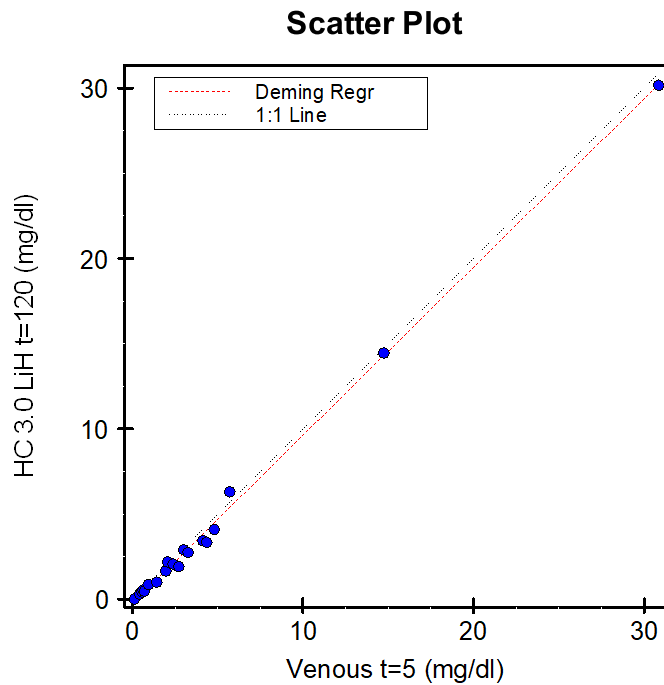
Specimen	X	Y	Bias	Specimen	X	Y	Bias	Specimen	X	Y	Bias
S00001	2,06	2,18	0,12	S00008	4,13	3,43	-0,70	S00015	0,63	0,53	-0,10
S00002	4,8	4,09	-0,71	S00009	3	2,90	-0,10	S00016	30,85	30,16	-0,69
S00003	0,43	0,30	-0,13	S00010	0,7	0,46	-0,24	S00017	3,26	2,74	-0,52
S00004	1,96	1,65	-0,31	S00011	0,12	0,00	-0,12	S00018	4,35	3,33	-1,02
S00005	0,56	0,43	-0,13	S00012	14,74	14,45	-0,29	S00019	5,71	6,30	0,59
S00006	2,72	1,91	-0,81	S00013	1,43	0,99	-0,44	S00020	0,7	0,46	-0,24
S00007	2,39	2,05	-0,34	S00014	0,94	0,86	-0,08				

Values with an "X" were excluded from the calculations. Outliers "O" were also excluded.

Alternate (Quantitative) Method Comparison

X Method Venous t=5

Y Method HC 3.0 LiH t=120



This page contains a larger, working copy of the same graphs that appear on page 1.